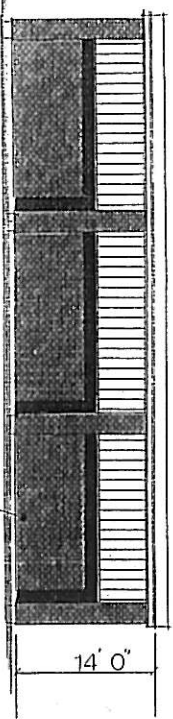
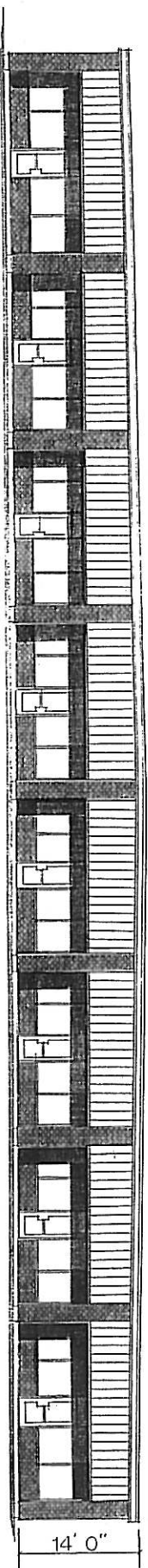


BACK ELEVATION



RIGHT SIDE ELEVATION

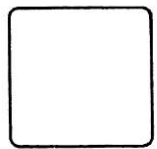


FRONT ELEVATION

Store 3  
↓

Store 8  
↓

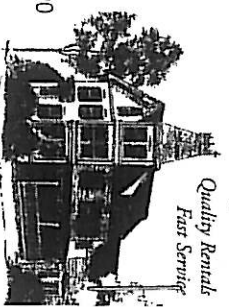
DATE	OCT 12, 1995
SCALE	1/8" = 1'-0"
BY	DMC
REVISION	11-15-88
PROJECT	NO. 8822
NO.	5



OWNER APPROVAL	
ELEVATION	
TENNEY MTN. PLAZA	
SGS, PLYMOUTH, N.H.	
536	

**RENTALS AVAILABLE!**  
**STOPPE MANAGEMENT SERVICES, INC.**

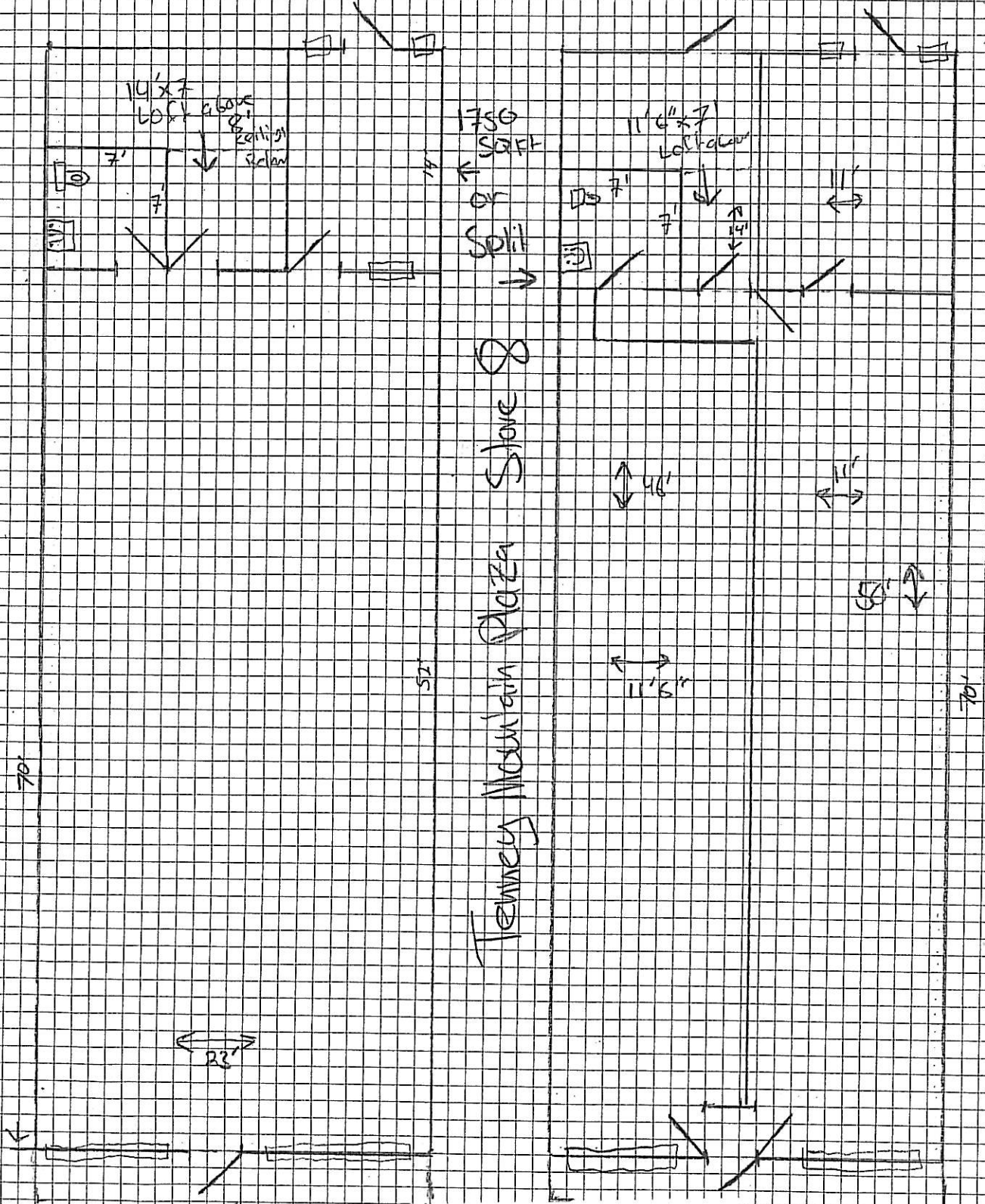
**Arlene Stoppe**  
**Donald Stoppe**  
**(603) 536-2479**  
fax (603) 536-1197  
40 Highland Street • PO Box 90  
Plymouth, NH 03264-0090



stoppe@stoppemanagement.com • info@stoppemanagement.com

Scale 1" = 1"  
Current Layout

Possible Alternative layout



4-7-11

Front  
25'  
35'

Front  
25'

**RENTALS AVAILABLE!**  
**STOPPE MANAGEMENT SERVICES, INC.**

**Arlene Stoppe**  
**Donald Stoppe**

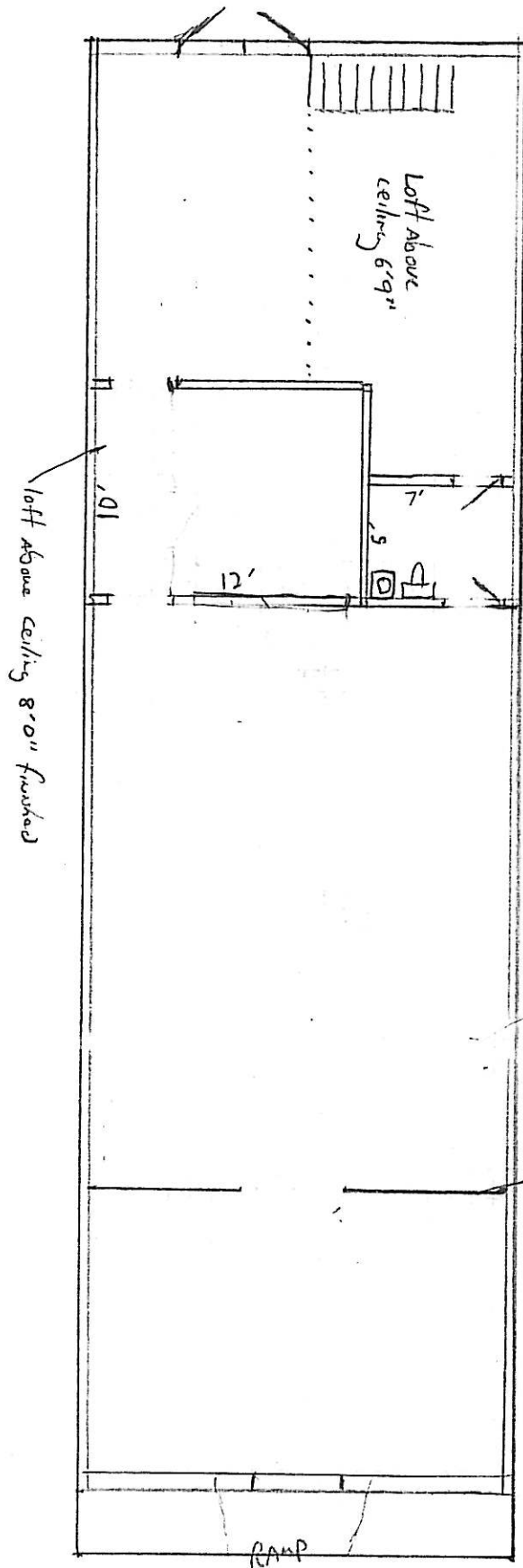
**(603) 536-2479**  
fax (603) 536-1197



40 Highland Street • PO Box 90  
Plymouth, NH 03264-0090

stoppemanagement.com • info@stoppemanagement.com

TENNEY MOUNTAIN PLAZA STORE 3 1400 square feet +/-



□ = 1 foot 1" = 8'  
GAS heat, central A/C

6'6" high wall now structural

**RENTALS AVAILABLE!**

**STOPPE MANAGEMENT SERVICES, INC.**

**Arlene Stoppe • Donald Stoppe**

48A Langdon Street, Corner of Highland Street

P.O. Box 90, Plymouth, NH 03264-0090

Web: stoppemanagement.com

email: info@stoppemanagement.com

(603) 536-2479 fax: (603) 536-1197

Quality Rentals • Fast Service



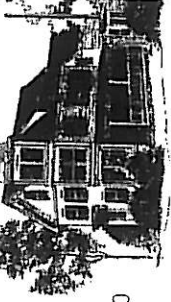


**RENTALS AVAILABLE!**

# STOPPE MANAGEMENT SERVICES, INC.

**Arlene Stoppe**  
**Donald Stoppe**  
**(603) 536-2479**  
fax (603) 536-1197

Quality Rentals  
Fast Service



40 Highland Street • PO Box 90  
Plymouth, NH 03264-0090

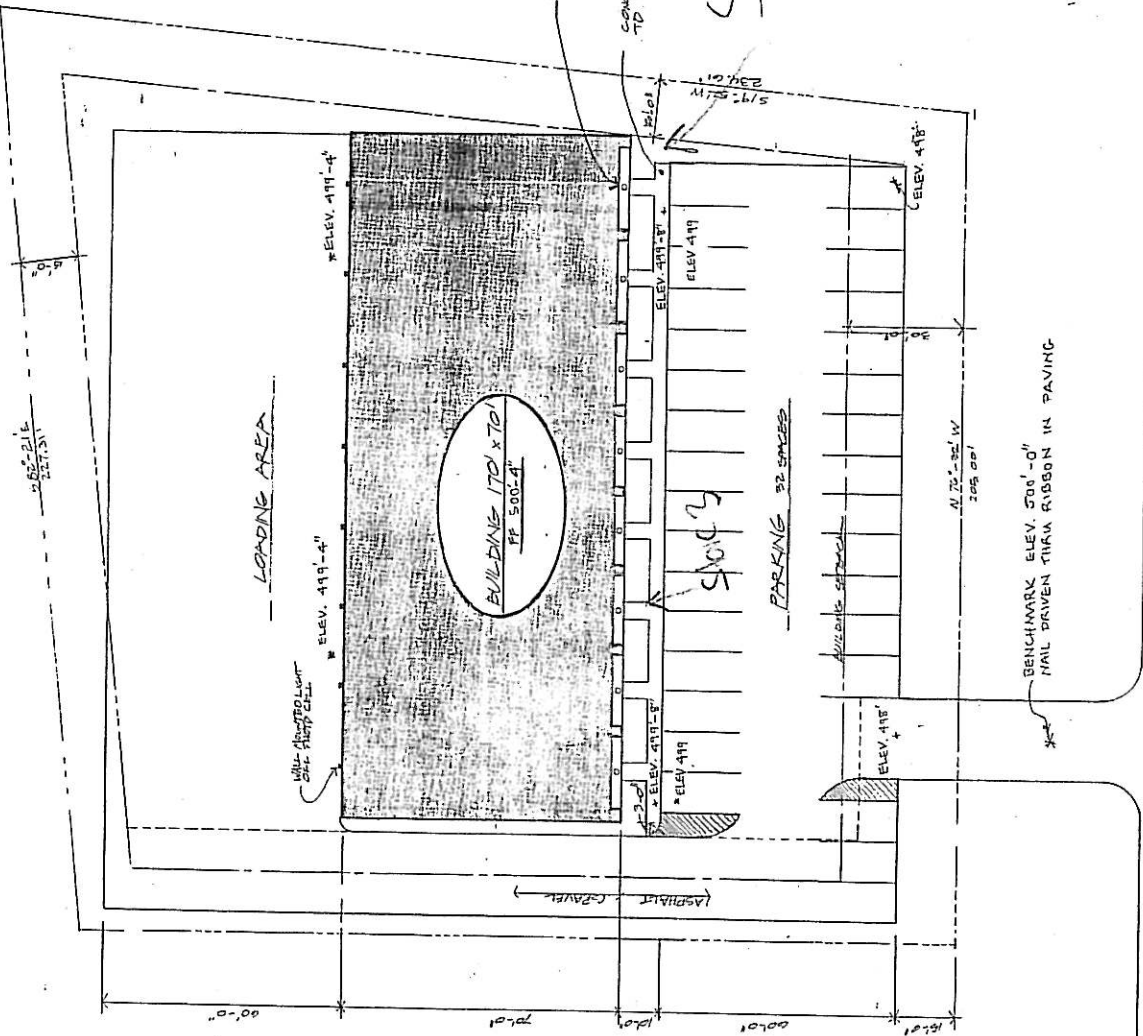
stoppe<sup>management.com</sup> • info@stoppe<sup>management.com</sup>

536-2479  
TENNEY MTN PLAZA  
S.G.S. PLYMOUTH, N.H.  
SITE PLAN

OWNER APPROVAL  
DATE:

Blank rectangular box for owner approval.

DATE SET	01/03/01
SCALE	1" = 20'-0"
BY	DTG
REVISION	12-12-00
PROJECT NO.	8822
SHEET NO.	1 OF 5



12-12-00 ADDITIONAL WORK ORDER # 2  
RAISED ALL GRADES 1'-0"